

# Easy Vision Picking 2

## Easy-Setup Image Processing Operations without Programming

EVP2 is an image processing application specially developed for use with a "pick & place" robot.

This software offers enhanced functionality and several times greater processing power than the previous EVP application, while maintaining the same ease of operation.

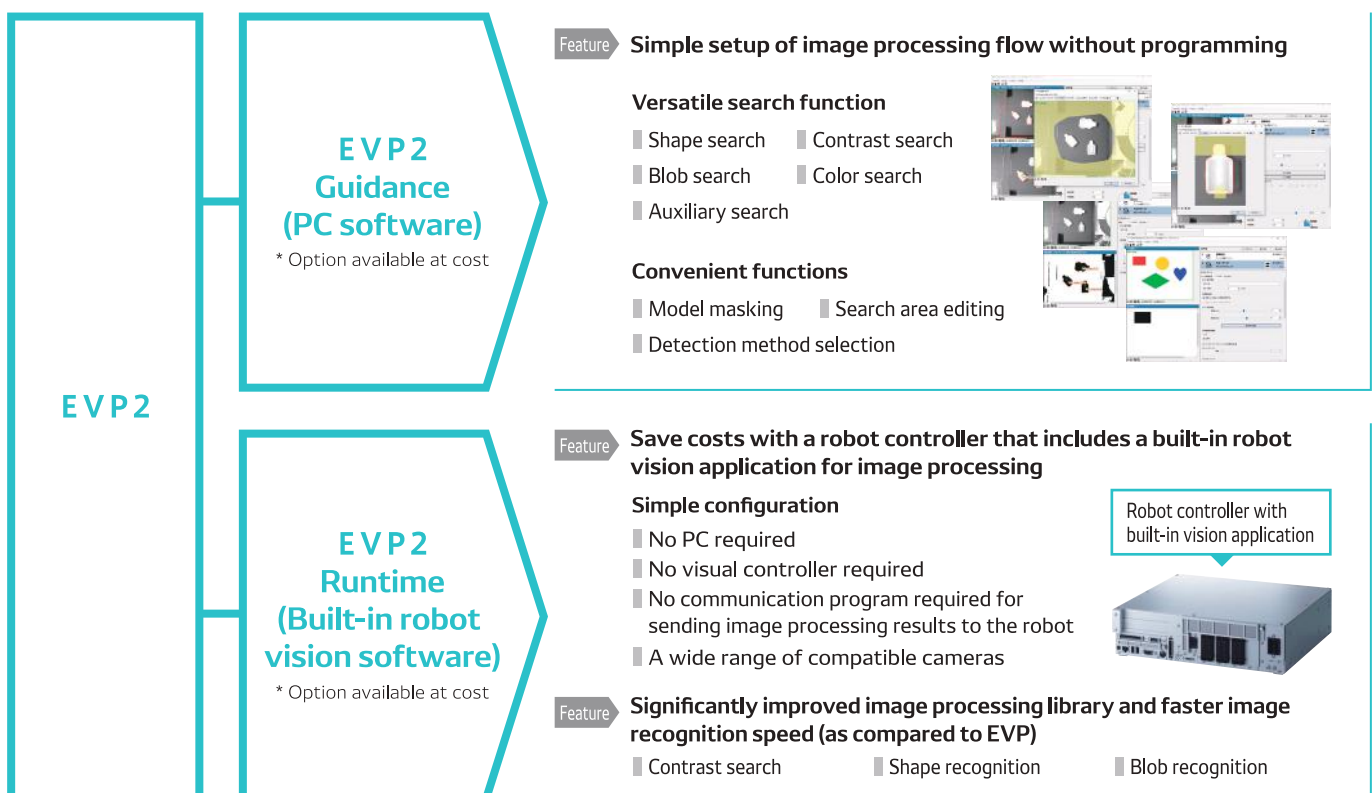


### Features of EVP2

EVP2 consists of EVP2 Guidance and EVP2 Runtime.

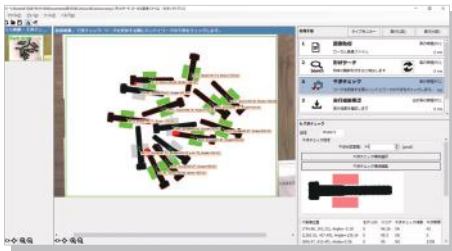
Image processing operations can be set using the application (EVP2 Guidance) that runs on a PC.

When EVP2 Runtime is running, only the robot controller and connected camera are required for operation.



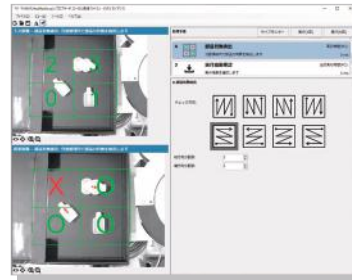
**Interference check function**

This function prevents the end effector from colliding against adjacent workpieces when grasping the detected workpiece.



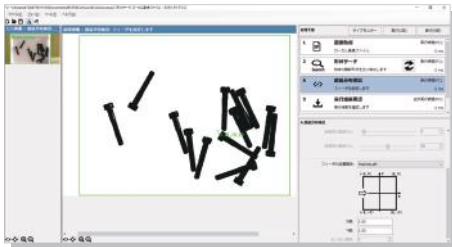
**Part presence detection function**

This function determines whether the detected workpiece is located within the specified area. The area can be specified based on the check direction, the number of longitudinal divisions and the number of lateral divisions.



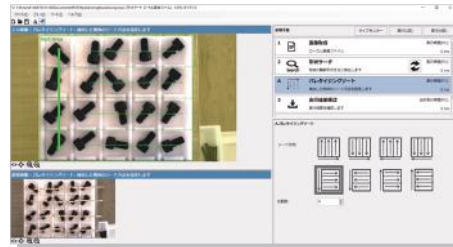
**Part distribution detection function**

During the EVP2 component distribution step, the position of the feeder can be controlled by dividing the area and accurately identifying the location of each part.

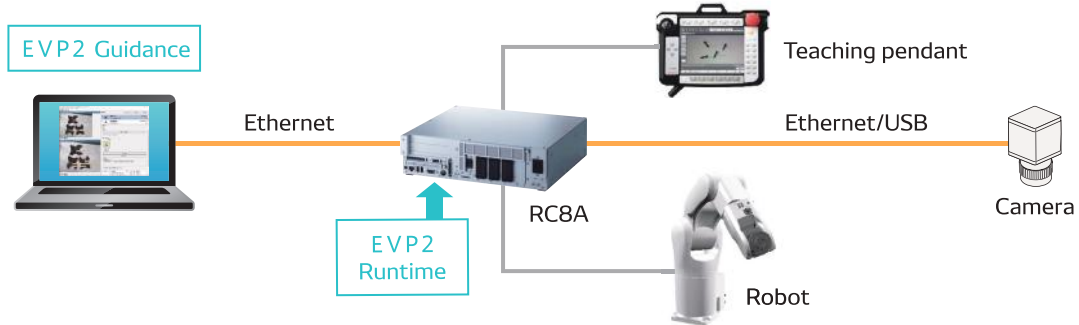


**Palletizing sort function**

This function sorts the detected parts according to the specified rule. The workpiece sort sequence can be decided based on the sorting direction and the number of divisions.



**System configuration**



**Operating environment**

- [ O S ] Windows® 7 / 8 / 10
- [ P C ] 2 GHz or faster multi-core CPU, 4 GHz or more RAM, 4 GB or larger HDD
- [Robot controller] RC8 Ver.2.11.1 or later, COBOTTA Ver.2.11.1 or later  
RC8 □-□□□□ - □□ E □ - □□ - □□□□  
(For the robot controller model, "Controller model" of DENSO ROBOT USER MANUALS See (ID: 1314). )

- [Recommended cameras] Basler GigE camera (ace series)
- iDS USB camera (uEye SE series)
- Canon network camera (WebView Livescope series)
- Canon network camera (N10-W02)

\* Windows is a trademark or registered trademark of Microsoft Corporation in the United States and other countries.



Please visit our website for more information on products and functions.  
<https://www.denso-wave.com/>



Official DENSO WAVE Channel:  
Provides explanatory videos of functions, case studies, and robot applications.



DENSO Products and Services Americas, Inc.  
3900 Via Oro Avenue, Long Beach, California, 90810, U.S.A.  
Phone : +1-888-476-2689 FAX : +1-310-952-7502

DENSO KOREA CORPORATION  
131, Seonggogae-ro, Uiwang-si, Gyeonggi-do, Korea 437-120  
Phone : +82-31-340-1783 FAX : +82-31-8033-7213

DENSO TAIWAN CORP.  
No.525 Sec.2, Mei Su Road, Jui Ping Li, Yang-Mei Town, Taoyuan Hsien, Taiwan  
Phone : +886 3-482-8001 FAX : +886 3-482-8003

DENSO EUROPE B. V. DENSO Robotics Europe  
Waldeckerstrasse 9 D-64546 Moerfelden-Walldorf, Germany  
Phone : +49-6105-27-35-150 FAX : +49-6105-27-35-180

DENSO (CHINA) INVESTMENT CO., LTD.  
No.35 Yuandian Road, Minhang District, Shanghai, CHINA 201108  
Phone : +86-21-2350-0093 FAX : +86-21-2350-0179

DENSO SALES (THAILAND) CO.,LTD.  
888 Moo 1, Bangna-Trad Rd. Km 27.5, T.Bangbor, A.Bangbor, Samutprakarn, 10560, Thailand  
Phone : +66-2-315-9500 FAX : +66-2-315-9556